



EVERYDAY CURRENT AFFAIRS – JANUARY 03, 2025

SCHEMES

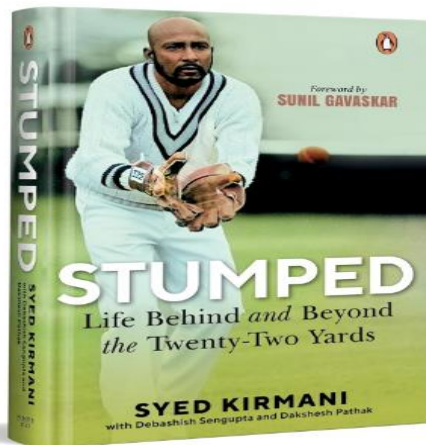
- **One Nation One Subscription (ONOS)**
- ✓ Launched on January 1, 2025, the One Nation One Subscription (ONOS) initiative marks a significant advancement in India's research and education landscape.



- ✓ This scheme aims to provide comprehensive access to international scholarly journals and articles for students, faculty, researchers, and scientists across the nation's government higher education institutions (HEIs) and central government research and development (R&D) centres.

BOOKS & AUTHORS

- **Syed Kirmani Releases Autobiography "Stumped: Life Behind and Beyond the Twenty-Two Yards"**



- ✓ The legendary former Indian cricketer and wicket-keeper Syed Mujtaba Hussein Kirmani released his autobiography titled “**Stumped: Life Behind and Beyond the Twenty-Two Yards**” at a grand event in Chinnaswamy Stadium, Bengaluru, Karnataka.
- ✓ The release coincided with Kirmani’s 75th birthday. The book is published by Penguin Play.

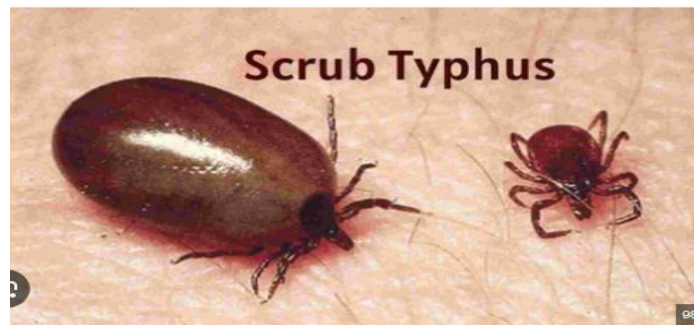
SCIENCE, TECHNOLOGY & ENVIRONMENT

- **Human Metapneumovirus (HMPV) Outbreak in China**
- ✓ China is currently experiencing a significant increase in human metapneumovirus (HMPV) cases, leading to concerns about a potential health crisis reminiscent of the COVID-19 pandemic.



- ✓ Reports indicate that hospitals are becoming overcrowded, with suggestions of multiple viruses, including HMPV, influenza A, Mycoplasma pneumoniae, and COVID-19, contributing to the situation. Despite some claims of a state of emergency, there has been no official confirmation from Chinese authorities.
- **Scrub Typhus Outbreak in Tamil Nadu**

- ✓ Scrub Typhus is a bacterial infection that is currently spreading in Tamil Nadu. Districts such as Chennai, Kanchipuram, Tirupattur, Tiruvallur, Chengalpattu, Ranipet, and Vellore have reported numerous cases.



- ✓ The Public Health Department has issued an alert, urging immediate measures to control the outbreak.
- ✓ Scrub typhus is caused by the bacterium *Orientia tsutsugamushi*.
- ✓ This bacterium is transmitted through bites from infected larval mites, commonly referred to as chiggers.

